

St Aidan's

Anglican Church

9 March 2025

Today's service comes from page 476 of A New Zealand Prayer Book,
and will be available online via [Facebook](#) or [YouTube](#)

Lent 1: Soul Food - all the things that nourish us

Readings

Deuteronomy 26:1-11
Romans 10:8b-13
Luke 4:1-13

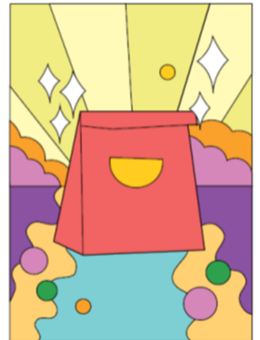
Sentence

Worship the Lord your God,
and serve only him.
Luke 4:8

Prayer

God of the wilderness,
your spirit leads us to face the truth,
unprotected and exposed:

In our times of trial, help us to resist the worship of empty power
and the illusion of invulnerability
that we might find our true food in Jesus Christ,
the Broken Bread. Amen



8am Hymns

P: WOV 506 vs 1, 2 & 5

O: See insert

Psalm: 91:1-2, 9-16 p. 304

R: WOV 6 vs 1, 4 & 7

Welcome to St Aidan's! Please join us for morning tea in the Gathering Area after our services. If you are new, or would like more information, please make sure to introduce yourself and fill in a Newcomer's form.

WORSHIP

CARING

MISSION

5 Ascot Avenue, Remuera, Auckland

What's on at St Aidan's

Today

8am - Holy Communion.

9:30am - Intergenerational service with Holy Communion - our whole church family worshipping together.

10:45am (approx.) - Confidential prayer in the Side Chapel.

This Week

Pins & Needles - Monday 10am in the GA.

Lent Study Groups - speak to Sarah, email the office, or add your name to the sign up sheet to register. we will be offering three opportunities (*which might be reduced to just two groups depending on interest*):

✦ **Wednesdays** 7:30pm in the Vicarage

✦ **Thursdays** 10am in the GA

✦ **Sundays** 11:30am in the GA

Plus Regular weekly events:

mainly music - 9:30am Wednesday.

Weekly Prayer - Thursday **9:15am** in the GA or [online via Zoom](#).

Mission Shop - 10am to 2pm Th,F,S.

Next Week

8am - Holy Communion.

9:30am - Family service with Holy Communion.

Prayers

- ◆ Our home groups and study groups, and their leaders
- ◆ Those who experience domestic violence, giving thanks for police, ambulance workers, and social workers who care for them
- ◆ As we journey into Lent we pray for ourselves and Christians around the world, remembering especially those who are persecuted for their faith



Coming Up

Evening Fellowship - Tuesday 18th March, 7:30pm in the GA. Rachael Murray will be speaking, "My Kenyan Adventure living on a conservancy in the bush."

'The Big Mission Home' fundraising walk for ACM - 22nd March.

Men's Breakfast - Thursday 27th March at Brown's Café.

ASTA - Friday 28th March, 10am in the GA.

Parish SGM - 30th March.

Extra Choir Practise - 5th & 12th April

Thank You

Thank you everyone who came to share pancakes on Shrove Tuesday Your generous support raised \$150 for 'The Big Mission Home'.

Our Lenten Journey

This year the theme of our Lenten journey is: **Soul food** -



inspired by the line in the prayer that Jesus taught us:

Give us today our daily bread.

Hōmai ki a mātou āiane i he taro mā mātou mō tēnei rā.

In the wilderness, Jesus reminded us that people don't live by bread alone. Through our worship this lent we will explore what sustains and nourishes us - both food and beyond - drawing from a resource prepared by the Methodist Church of Great Britain.

To nourish your personal journey, daily email is available through the journey offering inspiration, biblical, prayer and music resources, together with creative ideas for you to explore that this theme might mean in your life. You can sign up here: methodist.org.uk/SoulFood

MailChimp Update

Our first [parish update for 2025](#) was sent out last Saturday 1st March. If you didn't receive it, please check your junk mail folder, and if it's still not there please get in touch with

Anne in the office. You can find it and other info online at our [News page](#).



Lent Studies

Lent is a wonderful time to step aside and reflect on our faith and spirituality. This year's Lent Study, which comes to us from the Waiapu Diocese, has passages and questions from a wide diversity of views and experiences.

Many of our homegroups will be exploring these same themes in their time together. If you would like to join a one-off study group for the Lenten season, write your name on the sign up sheet or contact the office. You may also like to get a copy of this resource to use for your own reflection. This can be printed for you or [downloaded from our website's "Resources" page](#).

Special General Meeting

Our SGM will be on Sunday 30th March, approx. 10:45am, after the 9:30am service. Annual Financial Statements to 31st December 2024 will be available next week.

New Singers Welcome

Have you ever thought about joining the choir? We invite everyone to try singing with us during Lent and help to prepare some special music from Palm Sunday to Easter Sunday. Practises on Sunday at 9am and Saturday 10am-11:30am on 5th and 12th April. Please let Antoinette know if you would like to join in.



As our team prepares for the walk on 22nd March we invite you to, physically or metaphorically, 'walk alongside us'.

Ways to help:

- ☺ Sponsor our walkers - our walkers registered so far include Sarah, Nic, Anne P, Anne G-F. As we go to print Anne P is #10 on the list of individual fundraisers, and St Aidan's #7 in teams, but we can do better!
- ☺ Forward the giving link to 10 friends and ask them to support our team [Auckland City Mission - Te Tāpui Atawhai - St Aidan's Remuera](#)
- ☺ Join the WhatsApp group and follow our progress on the day
- ☺ Join us for a part of the distance - you can join in at various stages along the way and walk for as long as you want, flat, downhill or up
- ☺ Ask a friend to walk with you
- ☺ Drive your car to pick up or drop off walkers at locations along the way
- ☺ Volunteer to babysit children of team members who are walking



WHY ARE WE WALKING?

More than 57,000 women in New Zealand are homeless*, but they are largely hidden – living in cars, emergency accommodation or couch-surfing, as well as on the street.

Shockingly, there are now more women experiencing homelessness in Aotearoa than men.

Too many women, like Maryann and Denise (pictured), have been driven into homelessness by violence. Maryann and Denise have been inseparable since they moved into apartments at HomeGround. They are almost always laughing and smiling. But their happiness has been hard-won.

“If you’d come from the lives we’ve come from, you’d be laughing now too,” says Maryann.

Your support will help more women like Maryann and Denise find a safe place to heal and thrive. Read their full story [here](#) and see how your donation will make a positive difference.

* According to the 2023 census



**THE
BIG
MISSION
HOME**

SATURDAY 22ND MARCH
DEPARTING FROM ST AIDAN'S @ 9AM

**TE TĀPUI ATAWHAI
AUCKLAND
CITY MISSION**



The Route: Starting at St Aidan's, walking along Remuera Road, St John's Road, Kohimarama Road, Kepa Road, Patterson Avenue, and Tamaki Drive into Britomart.

Finally, via Queen Street and Albert Park, we will be making some stops around the city to link in with the Mission's list of 'Activations' before arriving at HomeGround in Federal Street.

Where can you join in and walk with us?

St Aidan's to:

- St John's Theological College – 4km (*distance from St Aidan's*)
- St Thomas' Tāmaki – 5km
- Eastridge Shopping Centre – 7km (*Join here to walk the final 10kms*)
- Mission House, Mission Bay – 8.5km
- Okahu Bay Beach (lunch stop) – 10.5km
- Lilliputt Tamaki Drive – 12.5km (*Join here to walk the final 5kms*)
- HomeGround via Queen Street & Albert Park – 17.5km

Follow our progress on the day with updates in the WhatsApp group

Contacts @ St Aidan's

To contact the people below whose details are not displayed, either refer to your St Aidan's parish directory, or contact Anne in the office who will be able to assist further.

Office: Mon-Fri 9 - 3:30	Anne Godman office@staidans.co.nz 929 4670 ext 1	Kids' Church:	Isabelle (Izzi) Hoskyn 929 4670 ext 5 children@staidans.co.nz
Vicar: 929 4670 ext 6	The Rev'd Sarah Stevens-Cross M 021 921 080 sarah@staidans.co.nz	Library:	Anne Mercer
Associate Priest:	Vacant	mainly music:	Hannah Scharf mainlymusic@staidans.co.nz
Curate:	Rev'd Christina Turner christina@staidans.co.nz	Men's Ministry:	John Priestley
Other Clergy:	The Rev'd Anne Priestley	Mission Shop:	Jenny Haggitt
Vicar's Warden:	Juli Mercer	Outreach:	Barbara Weir
People's Warden:	Lynne Trenwith	Pastoral Care:	Desré Simpson
Afternoon Fellowship (AFG):	Mary Parkinson	Pins & Needles:	Gail Hodder
Accounts:	accounts@staidans.co.nz	Prayer Circle:	Karel Lee
ASTA:	The Rev'd Anne Priestley	Privacy Officer:	Miles Brown privacy@staidans.co.nz
Choir:	Antoinette Pope	Website & Social Media:	Isobell Tregoweth staidansremuera@gmail.com
Coffee & K's:	Annette McGrevy & Ronnie Kay	Young Adults:	Isobell Tregoweth
Evening Fellowship (EF):	Jan Evans	Youth:	Nic Mercer youth@staidans.co.nz
Home Groups:	Sarah 929 4670 ext 6	Find us online:	www.staidans.co.nz @staidansremuera

Regular Events @ St Aidan's

Sunday Services	8am Holy Communion 9:30am Family service with Holy Communion, and including Youth and Kids' Church during the service
AFG	Afternoon Fellowship Group meets in the GA, first Tuesday of each month March to December, at 1:30pm. Next meeting Tuesday 4 th March.
Choir Practice	Practise on Sunday morning at 9am, Saturday 10am-11:30am on 8 th March, 5 th April. Contact Antoinette.
Contemplative Prayer	Meditation (online via Zoom meeting ID: 876 7943 0576) each Wednesday at 9:30am - contact Anne P.
Kids' Church	All children aged 3-10 during the 9:30am service. Contact Izzi .
mainly music	Wednesday at 9:30am in the Hall during school terms. Music and play for pre-school aged children and their families or care givers. Contact Hannah .
Men's Ministry	Meets on the last Thursday of each month, February to December, for breakfast at 7:30am. Contact John.
Mid-week Communion	Mid-week Holy Communion services, first Wednesday of the month at 11:30am.
Mission Shop	Open Thursday, Friday & Saturday 10am to 2pm. Contact Jenny.
Pins & Needles	A knitting for charity group, second Monday of each month. Contact Gail.
Prayer Meeting	Thursday mornings at 9:15am in the GA, or join from home via Zoom - Enter the Zoom online meeting ID : 959 1932 0025, or phone: +64 9 884 6780 and enter Passcode 1 #.
Small Groups	All welcome! Contact your small group (home group / house church / Bible study) leader, or speak to Sarah for information about joining a small group.
Vestry	Meet monthly 7:30pm in the GA, usually on the fourth Tuesday.
EF	Evening Fellowship meets monthly on the third Tuesday at 7:30pm in the GA.
ASTA - Advocacy at St Aidan's	Community-focused writing for advocacy and justice, 10am on the last Friday of each month. Contact Anne P.
Young Adults	Meets every second Sunday at 4:30pm to 6:30pm, plus occasional social events. Contact Isobell .
Youth	School aged youth (age 11+), Sunday during the 9:30am service. Contact Nic .

Bank Account for direct deposits:

Parish of St Aidan Remuera 06-0257-0052666-13

Please use your giving number as reference. Contact the office if you are unsure what it is or would like one allocated.