

# St Aidan's

## Anglican Church

### 16 March 2025

Today's service comes from page 404 of A New Zealand Prayer Book,  
and will be available online via [Facebook](#) or [YouTube](#)

## Lent 2: Soul Shelter - nourished by a safe home (for everyone)

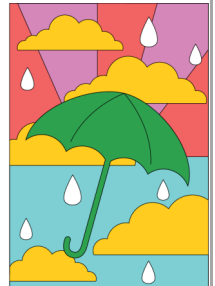
### Readings

Genesis 15:1-12, 17-18  
Philippians 3:17 - 4:1  
Luke 13:31-35

### Sentence

How often have I desired to  
gather your children together as a  
hen gathers her brood under her  
wings, and you were not willing!

*Luke 13:34b*



### Prayer

God, like a mother hen, you long to gather us and love us.  
Abraham longed for descendants: you gave him covenant love.  
Paul longed for heaven: you stood firm in your covenant love here on earth.  
We long for security: you show us Jesus, your steadfast love in our midst.  
We thank you.  
This we pray for your love's sake. Amen.

### 8am Hymns

**P: WOV 144ii** vs 1 & 3

**Psalm: 27 p. 225**

**O: See insert sheet**

**R: WOV 170ii** vs 1 & 5

Welcome to St Aidan's! Please join us for morning tea in the Gathering Area after our services. If you are new, or would like more information, please make sure to introduce yourself and fill in a Newcomer's form.

**WORSHIP**

**CARING**

**MISSION**

5 Ascot Avenue, Remuera, Auckland

# What's on at St Aidan's

## Today

**8am** - Holy Communion.

**9:30am** - Family service with Holy Communion. *Kids' Church and Youth programmes held during this service.*

**10:45am** (approx.) - Confidential prayer in the Side Chapel.

## This Week

**Evening Fellowship** - Tuesday 18<sup>th</sup> March, 7:30pm in the GA. Rachael Murray will be speaking, "My Kenyan Adventure living on a conservancy in the bush." All welcome.

**Lent Study Group:** Sunday 11:30am in the GA. Speak to Christina if you would like to join in.

**The Big Mission Home** - Leaving St Aidan's at 9am, and walking to HomeGround. Please support us!

**Plus Regular weekly events:**

**mainly music** - 9:30am Wednesday.

**Weekly Prayer** - Thursday **9:15am** in the GA or online via Zoom.

**Mission Shop** - 10am to 2pm Th,F,S.

## Next Week

**8am** - Holy Communion.

**9:30am** - Family service with Holy Communion.

## Prayers

- ◆ Our Mission Shop and its volunteers as they minister to the public raising funds to support missions here and overseas
- ◆ Those who are homeless and whose homes are not safe, or inadequate for their needs
- ◆ Natural disaster areas around the world, especially those displaced by recent cyclones, flooding and fires



## Coming Up

**Coffee & K's** - Meeting at Mission House parking area Mission Bay at 10:15am (*slightly later than usual*) or St Aidan's 10am to carpool (*let Annette know if you would like a ride*) and walking along Tamaki Drive. Our table is booked at Akarana Eatery for 11:15am, and after coffee we will gather at Okahu Bay and cheer on the Big Mission Home walkers.

**Men's Breakfast** - Thursday 27<sup>th</sup> March at Brown's Café.

**ASTA** - Friday 28<sup>th</sup> March, 10am in the GA.

**Parish SGM** - 30<sup>th</sup> March.

**Extra Choir Practise** - 5<sup>th</sup> & 12<sup>th</sup> April

**Annual Cleaning Bee** - 12<sup>th</sup> April.

**Palm Sunday** - 13<sup>th</sup> April.

**Holy Week** - 14<sup>th</sup> to 20<sup>th</sup> April.

## Our Lenten Journey

This year the theme of our Lenten journey is:



**Soul food** -

inspired by the line in the prayer that Jesus taught us: Give us today our daily bread. Hōmai ki a mātou āianeī he taro mā mātou mō tēnei rā.

In the wilderness, Jesus reminded us that people don't live by bread alone. Through our worship this lent we will explore what sustains and nourishes us - both food and beyond - drawing from a resource prepared by the Methodist Church of Great Britain.

To nourish your personal journey, daily email is available through the journey offering inspiration, biblical, prayer and music resources, together with creative ideas for you to explore that this theme might mean in your life. You can sign up here: [methodist.org.uk/SoulFood](http://methodist.org.uk/SoulFood)

## 'The Apostle' Magazine

Our Easter edition is coming out very soon, so if you have a contribution to make please send through to the office by Sunday 30<sup>th</sup> March at the latest. The theme of our Easter magazine will follow on from Lent - Soul Food and the ways God nourishes us. Do you have a song, book, recipe, or location that you feel nourishes your soul? We would love to hear about it. Contributions and photos welcome.

## Lent Studies

If you would like to use the Lent study book, "This is Good News" for your own reflection, these can be [downloaded from our website's "Resources" page](#) or contact the office if you would like a printed copy.

## Special General Meeting

Our Parish SGM is on Sunday 30<sup>th</sup> March after 9:30am service. The SGM is a great opportunity to gain a better understanding and insight into the finances of our church, when these items will be presented:

- Accounts for the year 2024
- Mission Giving for 2024
- Budget 2025
- Kitchen Project Funds
- Endowment Fund

The [Annual Financial Statements to 31<sup>st</sup> December 2024](#) are available online. Limited printed copies are available in the GA or on request from the office.

## New Singers Welcome

Singers invited to join at Holy Trinity Cathedral Parnell on Sunday 13<sup>th</sup> April at 5pm, for Stainer's magnificent Easter oratorio **The Crucifixion**. Register online by contacting Cathedral Director of Choirs, Peter Watts [music@holv-trinity.org.nz](mailto:music@holv-trinity.org.nz) or 027 522 7124. Full details on the noticeboard.



As our team prepares for the walk on 22<sup>nd</sup> March we invite you to, physically or metaphorically, 'walk alongside us'

### ***Ways to help:***

- ☺ Join the team - sign up for 5km, 10km or 17km
- ☺ [Sponsor our walkers](#). As we go to print St Aidan's is in the top ten teams, for fundraising but we have a long way to go to reach our \$10,000 goal!
- ☺ Forward the giving link to 10 friends and ask them to support our team [Auckland City Mission - Te Tāpui Atawhai - St Aidan's Remuera](#)
- ☺ Join the WhatsApp group and follow our progress on the day
- ☺ Join us for a part of the distance - you can join in at various stages along the way and walk for as long as you want, flat, downhill or up
- ☺ Drive your car to pick up or drop off walkers at locations along the way - contact the office to volunteer
- ☺ Volunteer to babysit children of team members who are walking



# WHY ARE WE WALKING?

**More than 57,000 women in New Zealand are homeless\***, but they are largely hidden – living in cars, emergency accommodation or couch-surfing, as well as on the street.

Shockingly, there are now more women experiencing homelessness in Aotearoa than men.

Too many women, like Maryann and Denise (pictured), have been driven into homelessness by violence. Maryann and Denise have been inseparable since they moved into apartments at HomeGround. They are almost always laughing and smiling. But their happiness has been hard-won.

*“If you’d come from the lives we’ve come from, you’d be laughing now too,”* says Maryann.

**Your support will help more women like Maryann and Denise find a safe place to heal and thrive.** Read their full story [here](#) and see how your donation will make a positive difference.

*\* According to the 2023 census*



**THE  
BIG  
MISSION  
HOME**

**SATURDAY 22ND MARCH**  
**DEPARTING FROM ST AIDAN'S @ 9AM**

**TE TĀPUI ATAWHAI  
AUCKLAND  
CITY MISSION**



**The Route:** Starting at St Aidan's, walking along Remuera Road, St John's Road, Kohimarama Road, Kepa Road, Patterson Avenue, and Tamaki Drive into Britomart.

Finally, via Queen Street and Albert Park, we will take part in some of “The Big Mission Home” activities around the city before arriving at HomeGround in Federal Street.

## **Where can you join in and walk with us?**

### **9am at St Aidan's to:**

- ➔ St John's Theological College – 4km (distance from St Aidan's) approx. 10am
- ➔ St Thomas' Tāmaki – 5km
- ➔ Eastridge Shopping Centre – (Join here to walk the final 10kms) approx. 11am
- ➔ Mission House, Mission Bay – 8.5km
- ➔ Okahu Bay Beach (lunch stop) – 10.5km departing approx. 12:30pm
- ➔ Lilliputt Tamaki Drive – 12.5km (Join here to walk the final 5kms) approx. 1pm
- ➔ HomeGround via Queen Street & Albert Park – 17.5km approx. 2:30pm

**Follow our progress on the day with updates in the WhatsApp group**

# Contacts @ St Aidan's

To contact the people below whose details are not displayed, either refer to your St Aidan's parish directory, or contact Anne in the office who will be able to assist further.

<b>Office:</b> Mon-Fri 9 - 3:30	Anne Godman <a href="mailto:office@staidans.co.nz">office@staidans.co.nz</a> 929 4670 ext 1	<b>Kids' Church:</b>	Isabelle (Izzi) Hoskyn 929 4670 ext 5 <a href="http://children@staidans.co.nz">children@staidans.co.nz</a>
<b>Vicar:</b> 929 4670 ext 6	The Rev'd Sarah Stevens-Cross M 021 921 080 <a href="mailto:sarah@staidans.co.nz">sarah@staidans.co.nz</a>	<b>Library:</b>	Anne Mercer
<b>Associate Priest:</b>	Vacant	<b>mainly music:</b>	Hannah Scharf <a href="mailto:mainlymusic@staidans.co.nz">mainlymusic@staidans.co.nz</a>
<b>Curate:</b>	Rev'd Christina Turner <a href="mailto:christina@staidans.co.nz">christina@staidans.co.nz</a>	<b>Men's Ministry:</b>	John Priestley
<b>Other Clergy:</b>	The Rev'd Anne Priestley	<b>Mission Shop:</b>	Jenny Haggitt
<b>Vicar's Warden:</b>	Juli Mercer	<b>Outreach:</b>	Barbara Weir
<b>People's Warden:</b>	Lynne Trenwith	<b>Pastoral Care:</b>	Desré Simpson
<b>Afternoon Fellowship (AFG):</b>	Mary Parkinson	<b>Pins &amp; Needles:</b>	Gail Hodder
<b>Accounts:</b>	<a href="mailto:accounts@staidans.co.nz">accounts@staidans.co.nz</a>	<b>Prayer Circle:</b>	Karel Lee
<b>ASTA:</b>	The Rev'd Anne Priestley	<b>Privacy Officer:</b>	Miles Brown <a href="mailto:privacy@staidans.co.nz">privacy@staidans.co.nz</a>
<b>Choir:</b>	Antoinette Pope	<b>Website &amp; Social Media:</b>	Isobell Tregoweth <a href="mailto:staidansremuera@gmail.com">staidansremuera@gmail.com</a>
<b>Coffee &amp; K's:</b>	Annette McGrevy & Ronnie Kay	<b>Young Adults:</b>	Isobell Tregoweth
<b>Evening Fellowship (EF):</b>	Jan Evans	<b>Youth:</b>	Nic Mercer <a href="mailto:youth@staidans.co.nz">youth@staidans.co.nz</a>
<b>Home Groups:</b>	Sarah 929 4670 ext 6	<b>Find us online:</b>	<a href="http://www.staidans.co.nz">www.staidans.co.nz</a> <a href="http://staidansremuera">@staidansremuera</a>

## Regular Events @ St Aidan's

<b>Sunday Services</b>	<b>8am</b> Holy Communion <b>9:30am</b> Family service with Holy Communion, and including Youth and Kids' Church during the service
<b>AFG</b>	Afternoon Fellowship Group meets in the GA, first Tuesday of each month March to December, at 1:30pm. Next meeting Tuesday 4 <sup>th</sup> March.
<b>Choir Practice</b>	Practise on Sunday morning at 9am, Saturday 10am-11:30am on 8 <sup>th</sup> March, 5 <sup>th</sup> April. Contact Antoinette.
<b>Contemplative Prayer</b>	Meditation ( <a href="#">online via Zoom</a> meeting ID: 876 7943 0576) each Wednesday at 9:30am - contact Anne P.
<b>Kids' Church</b>	All children aged 3-10 during the 9:30am service. Contact <a href="#">Izzi</a> .
<b>mainly music</b>	Wednesday at 9:30am in the Hall during school terms. Music and play for pre-school aged children and their families or care givers. Contact <a href="#">Hannah</a> .
<b>Men's Ministry</b>	Meets on the last Thursday of each month, February to December, for breakfast at 7:30am. Contact John.
<b>Mid-week Communion</b>	Mid-week Holy Communion services, first Wednesday of the month at 11:30am.
<b>Mission Shop</b>	Open Thursday, Friday & Saturday 10am to 2pm. Contact Jenny.
<b>Pins &amp; Needles</b>	A knitting for charity group, second Monday of each month. Contact Gail.
<b>Prayer Meeting</b>	Thursday mornings at 9:15am in the GA, or join from home via Zoom - Enter the <a href="#">Zoom online meeting ID:</a> 959 1932 0025, or phone: +64 9 884 6780 and enter Passcode 1 #.
<b>Small Groups</b>	All welcome! Contact your small group (home group / house church / Bible study) leader, or speak to <a href="#">Sarah</a> for information about joining a small group.
<b>Vestry</b>	Meet monthly 7:30pm in the GA, usually on the fourth Tuesday.
<b>EF</b>	Evening Fellowship meets monthly on the third Tuesday at 7:30pm in the GA.
<b>ASTA - Advocacy at St Aidan's</b>	Community-focused writing for advocacy and justice, 10am on the last Friday of each month. Contact Anne P.
<b>Young Adults</b>	Meets every second Sunday at 4:30pm to 6:30pm, plus occasional social events. Contact <a href="#">Isobell</a> .
<b>Youth</b>	School aged youth (age 11+), Sunday during the 9:30am service. Contact <a href="#">Nic</a> .

### Bank Account for direct deposits:

Parish of St Aidan Remuera 06-0257-0052666-13

Please use your giving number as reference. Contact the office if you are unsure what it is or would like one allocated.